

State of Hawaii
Department of Land and Natural Resources (DLNR)

1151 Punchbowl St.
Honolulu, HI 96813



Date: 10/1/24

Scope of Work

To: Bidding Contractors

Copy: Shanel Enos
Bowers + Kubota
605 Laukapu Street, Suite 202
Hilo, Hawaii 96720

DLNR Job #: 25-SPH-001

Project Name: KALOPA, GENERAL REPAIRS

Location: Kalopa State Recreation Area, Hawaii Island
Hamakua, Hawaii

Scope of Work:

The work shall generally consist of minor repairs to structures and facilities at the Kalopa State Recreation Area according to the specifications attached. Scope of work shall include, but not limited to, minor carpentry, and other incidental work. Contractor shall be responsible for hazmat testing, and shall include the price for testing in the base bid. Abatement will be executed through a change order.

Base Bid: Minor carpentry work

- Cabin 1A Replace Sagging Shelves (4)
- Cabin 1A Replace Shower Bench (1)
- Cabin 1B Replace Sagging Shelves (4)
- Cabin 2 Replace Rotten Stairs & Install Transition (160 LF)
- Cabin 2A Replace Sagging Shelves (4)
- Cabin 2B Replace Sagging Shelves (4)
- Cabin 2B Replace wooden post and FRP panels on plumbing chase (20 SF)
- Kitchen/Dining Pavilion - Replace metal railings (150 LF)
- Daily Use Pavilion – Replace Landing (20 SF)

Additive Alternate #1: Cabin 1B Replace Flooring (130 SF)

Additive Alternate #2: Cabin 2A Replace Flooring (130 SF)

Additive Alternate #3: Cabin 2B Replace Flooring (130 SF)

Additive Alternate #4: Information Kiosk Repairs - Replace two posts

KALOPA, GENERAL REPAIRS

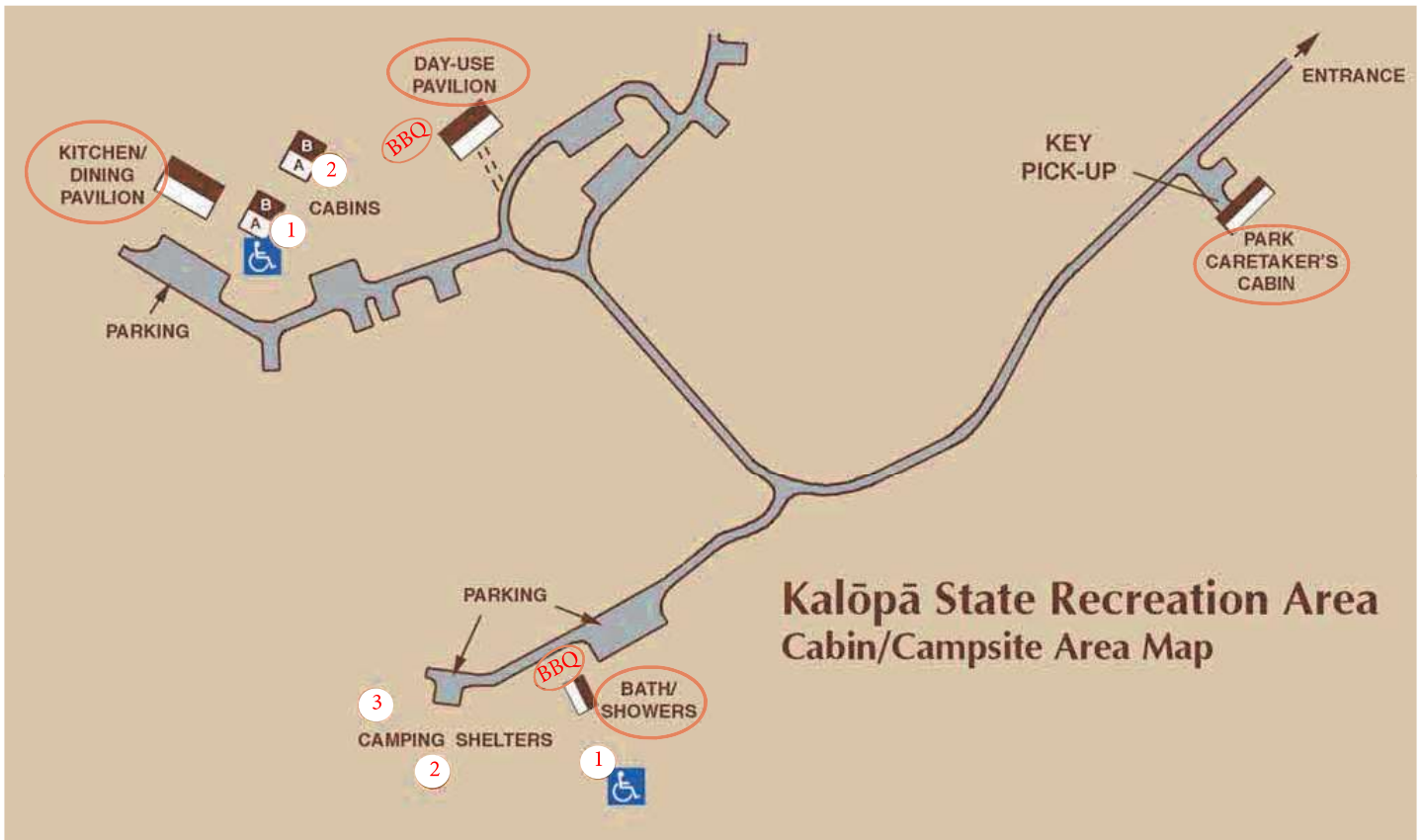
DLNR Job #: 25-SPH-001

Scope of Work continued:

KALOPA, GENERAL REPAIRS

DLNR Job #: 25-SPH-001

Plot Plan



KALOPA, GENERAL REPAIRS

DLNR Job #: 25-SPH-001

Contacts:

Project Coordinator

Shanel Enos , DLNR DPC Big Island

Cell: 808-829-1049

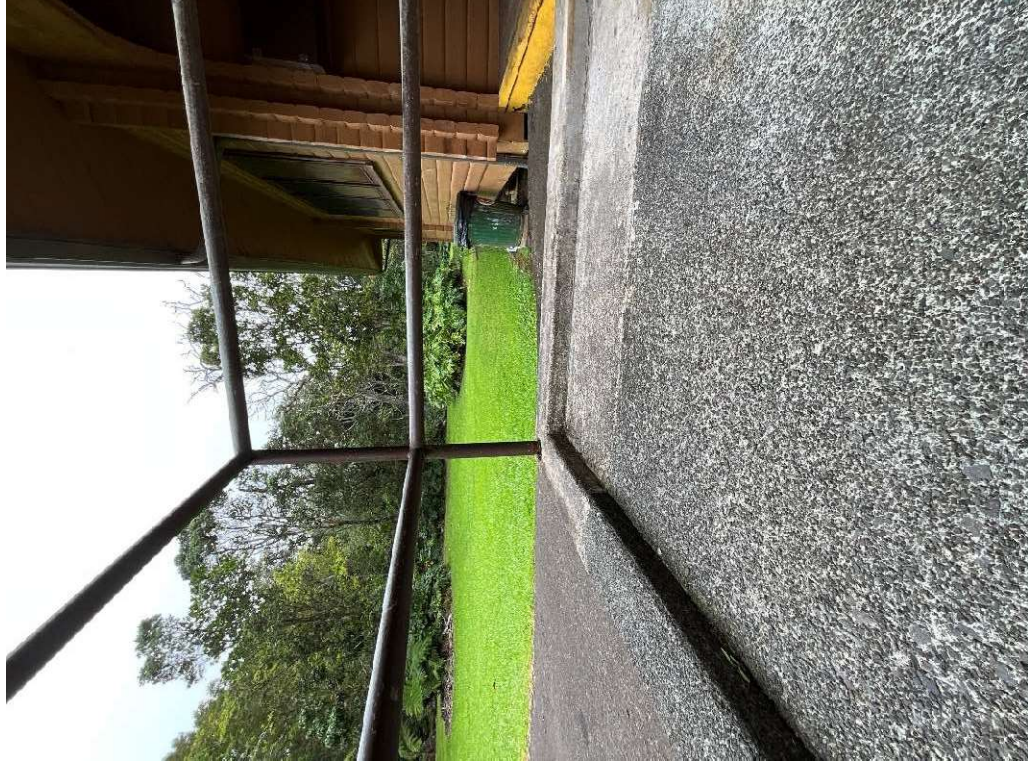
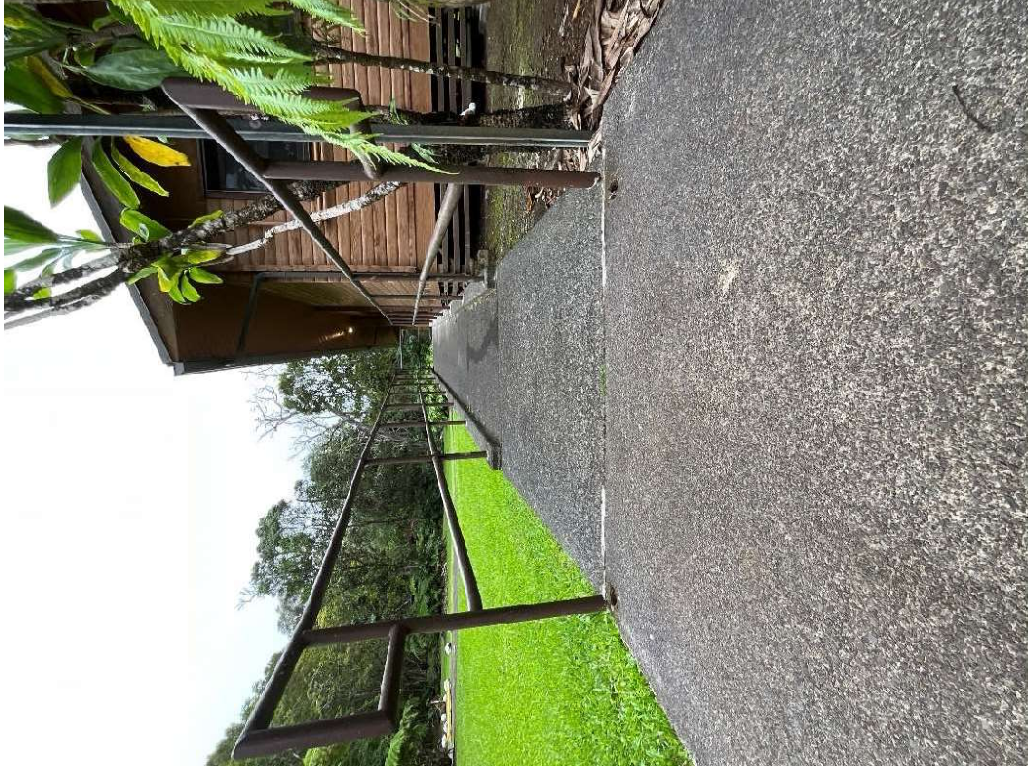
On-site contact persons during construction:

State Parks Staff

Phone:

Phone:

- Kitchen/Dining Pavilion
- Replace metal railings



Cabin 1A
- Repair and replace sagging shelves



Cabin 1A, cont.
- Replace shower bench



Cabin 1B

- Repair and replace sagging shelves



Cabin 1B, cont.
- Repair and replace flooring



Cabin 2

- Repair rotten stairs
- Replace transition on landing to match aluminum transition as cabin 1.



Cabin 2A

- Repair and replace sagging shelves



Cabin 2A, cont.

- Replace flooring



Cabin 2B

- Repair and replace sagging shelves



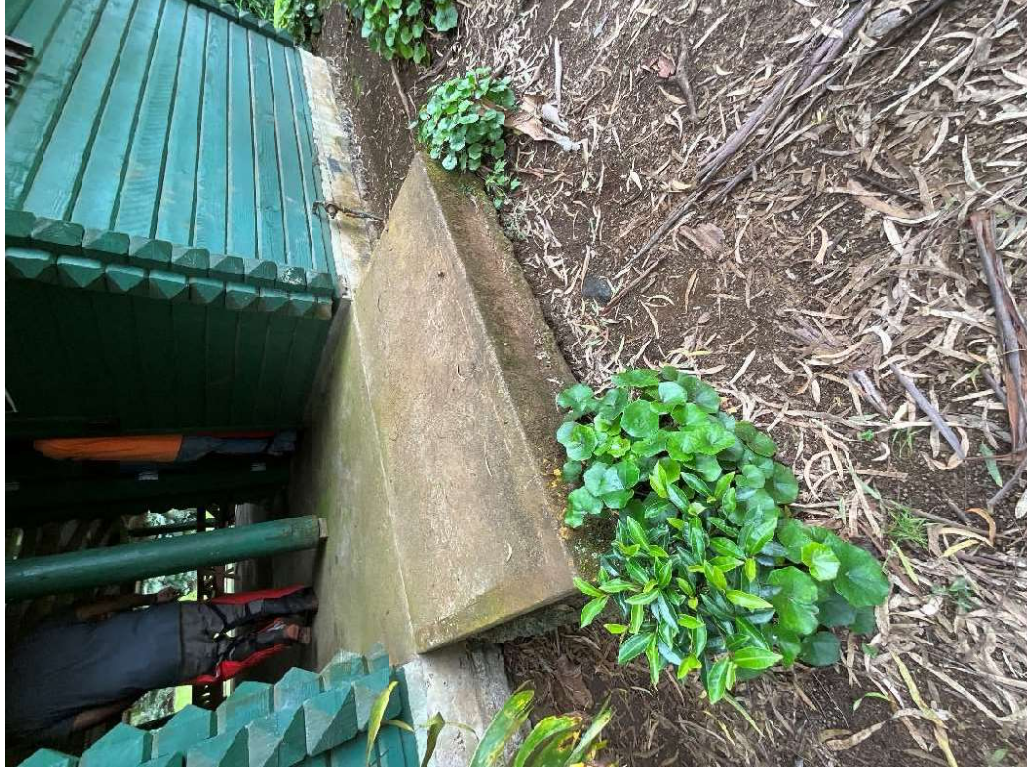
Cabin 2B, cont.

- Repair and replace wooden post and FRP panels on plumbing chase
- Replace flooring



Daily Use Pavilion

- Redo landing (see concrete specification)



Information Kiosk
- Replace termite damaged posts

